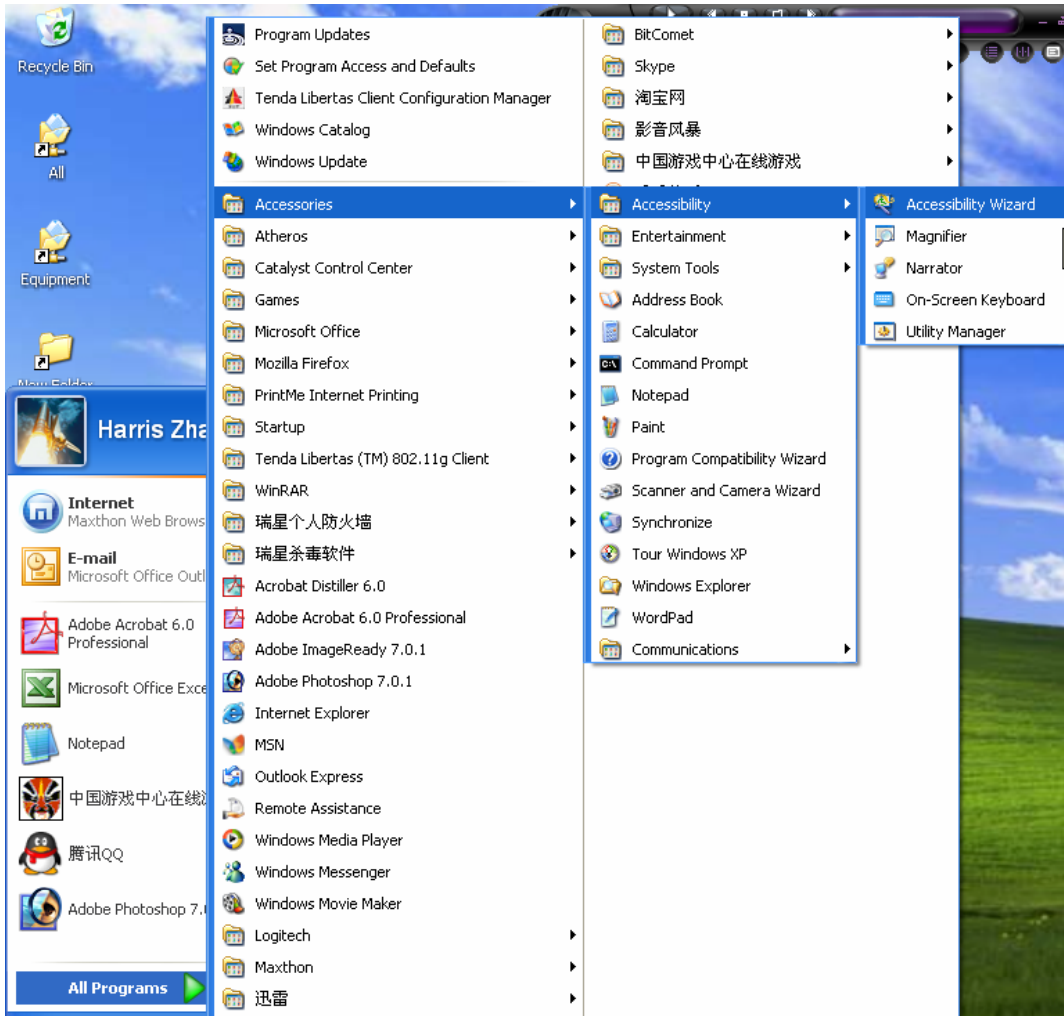
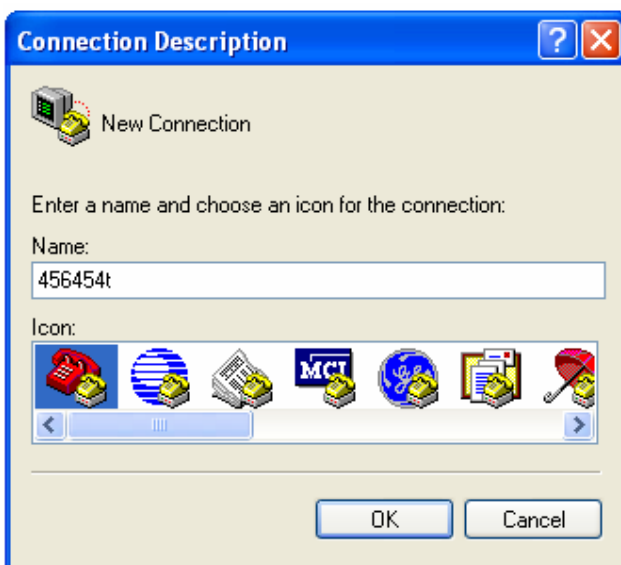


# Go to Console Port



Start/All Programs/Accessories/Accessibility/Accessibility Wizard/

---

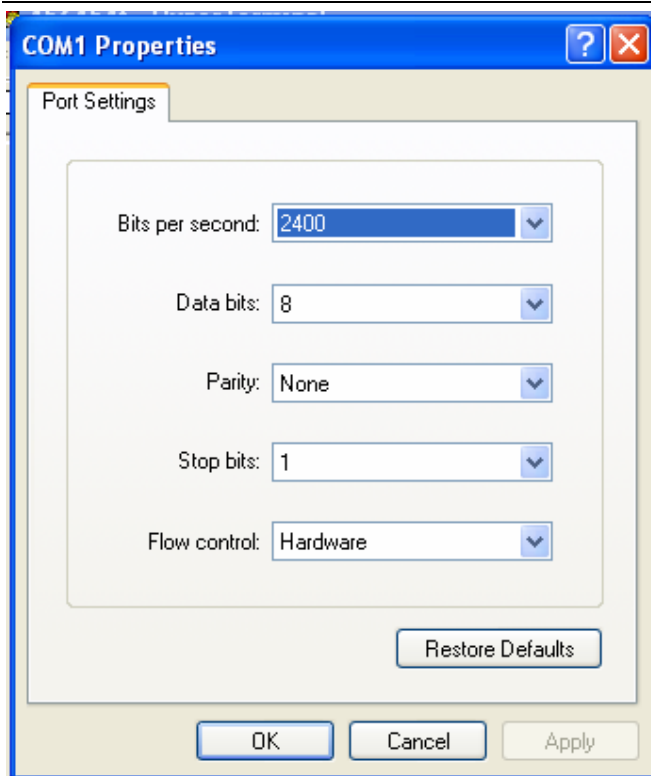


Enter the name(up to you) and then Click "OK"

---



Click "OK"



Click "Restore Defaults" and then Press "OK"

Then you will go into the setting page:

```
VoIP Mult-Function IP Access Gateway

(C)Bios Version 1.3T Built on Aug 11 2006
Copyright(c) 1999-2010 by VoIP Co,Ltd.All right reserved

Verify 16MDram.....PASS
Verify 2MFlash.....PASS

(Press d key to stop system boot/load)

Loading COS.....OK
Starting COS.....0xffffe00 (tRootTask): motFecPhyInit check cable connection

Network initialize.....OK
AudioCard[0] initialize...OK
Login:admin

Password: _____
Root>con

Please input the Config Password:
Root/Conf> _____

Root/Conf>sh e0
```

```
Root/Conf>sh e0

-----
Interface   IP_address      IP_mask         MAC
E0          192.168.1.18   255.255.255.0   08:ab:01:e0:32:ce
-----

-----
Hostname           : none@none.com.cn
DHCP                : Disable
PPPoE              : Disable
NAT                 : Disable
TCP port base      : 30000
TCP range           : 300
UDP port base      : 5000
UDP skip           : 0
Primary DNS Server : Disable
Secondary DNS Server : Disable
Primary Time Server : time.windows.com
Secondary Time Server : Disable
Tos                 : 5
-----

Root/Conf>sh e1

-----
Interface   IP_address      IP_mask         MAC
E1          10.10.10.250   255.255.255.0   06:ab:01:e0:32:ce
-----

Hostname           : none@none.com.cn
-----

Root/Conf>_
```

Account: admin

Password: admin

Enter: con

Configuration Password should be: "Enter"

When you enter sh e0, you may see the WAN port information;

When you enter sh e1, you may see the LAN port information.

When you get all these information, you may go to do the configuration again through LAN port or WAN port.